



# Cradle to Career

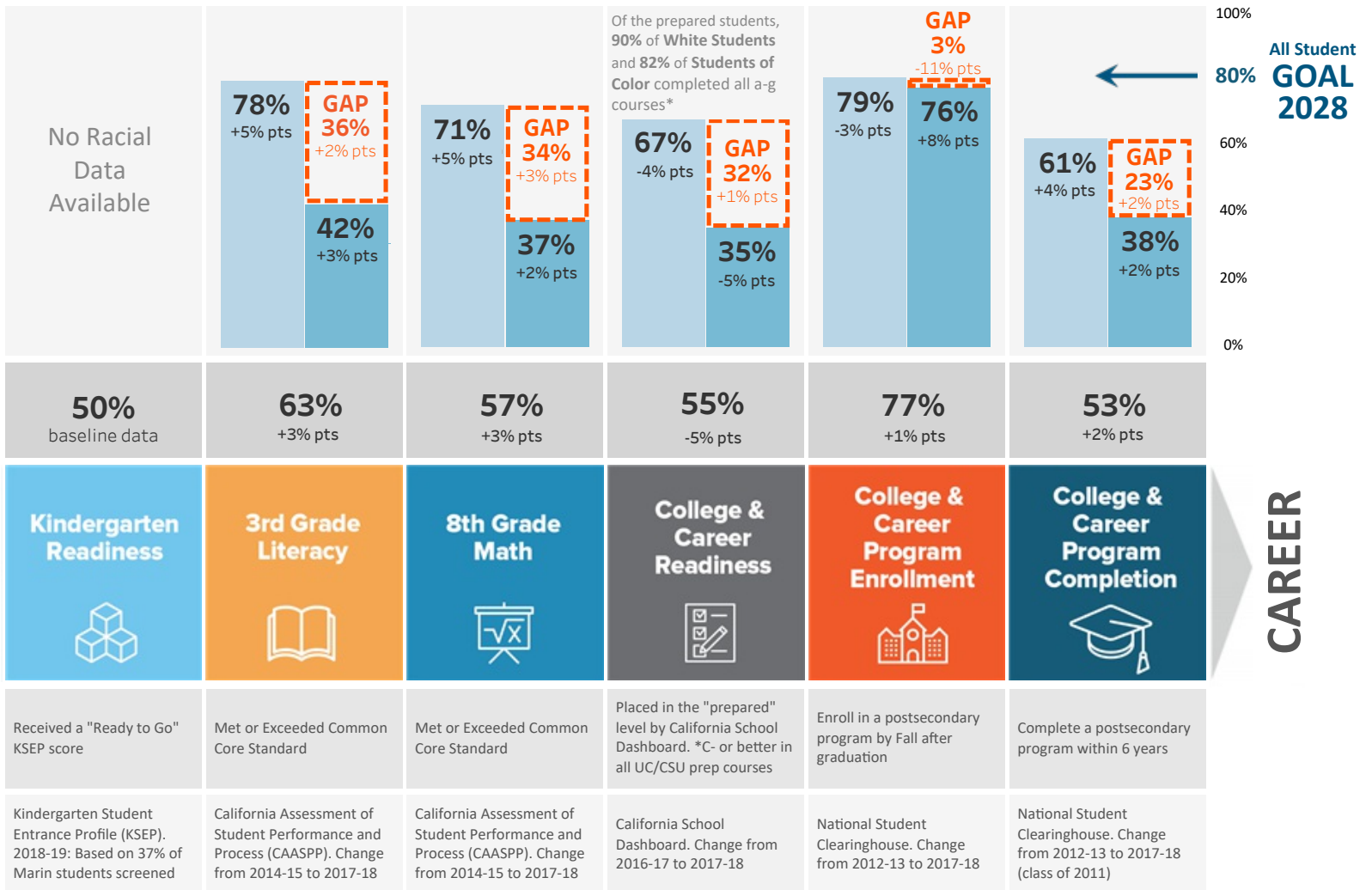
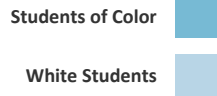
## Educational Progress Report

MARIN COUNTY

**Marin Promise Partners** have agreed to hold each other accountable to measurable collective impact goals at each of the six milestones described below. Since race is a leading predictor of educational outcomes, this report not only includes public data for all students but also highlights **racial disparity gaps**.

### RACIAL OPPORTUNITY GAP

Students meeting milestones:



Please visit [marinpromise.org/tableau](http://marinpromise.org/tableau) for up-to-date detailed data by race, gender, district and school.

Updated July 2019



# Cradle to Career

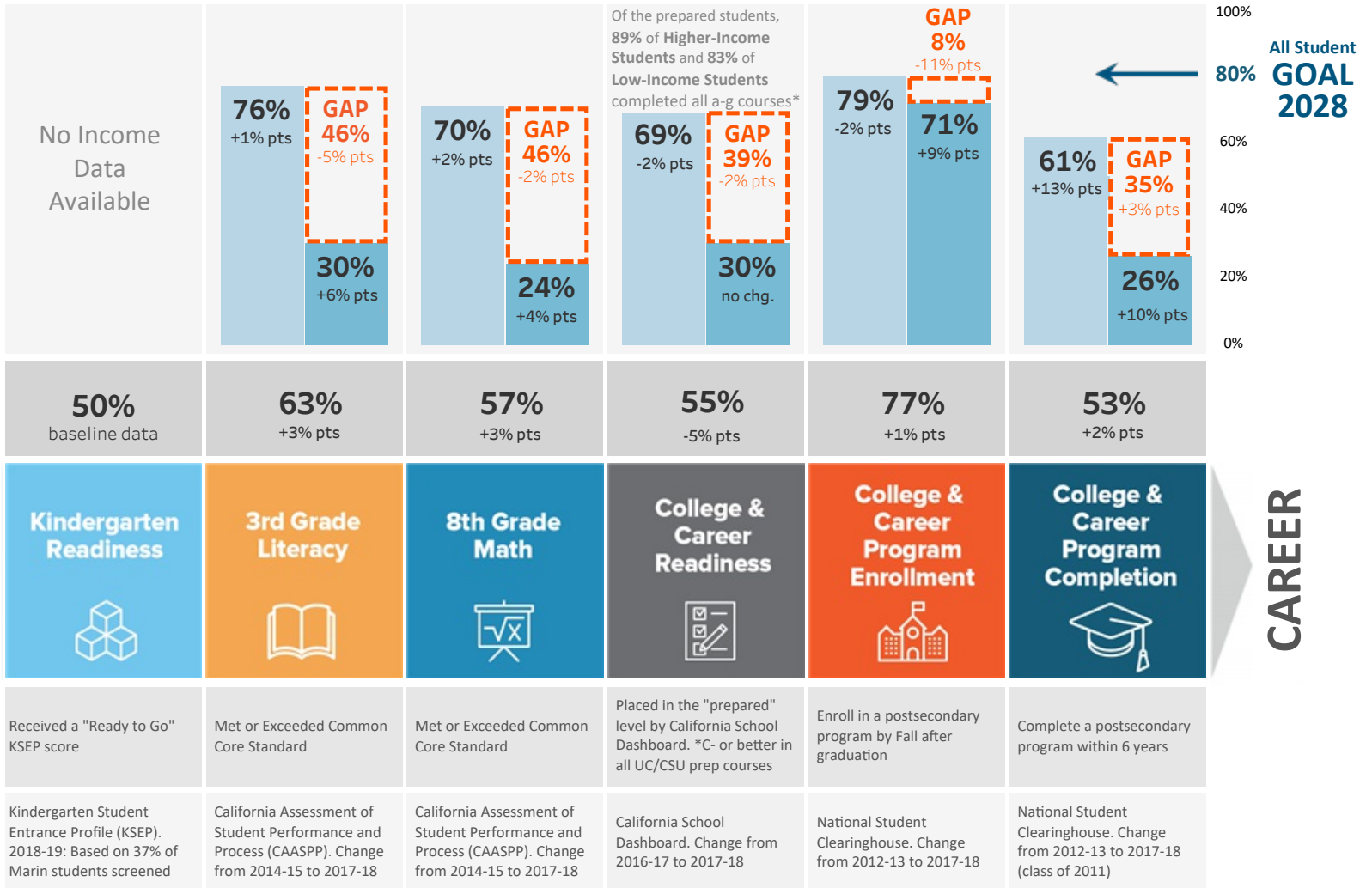
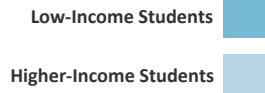
## Educational Progress Report

MARIN COUNTY

**Marin Promise Partners** have agreed to hold each other accountable to measurable collective impact goals at each of the six milestones described below. Since race is a leading predictor of educational outcomes, this report not only includes public data for all students but also highlights **income disparity gaps**.

### INCOME OPPORTUNITY GAP

Students meeting milestones:



Please visit [marinpromise.org/tableau](http://marinpromise.org/tableau) for up-to-date detailed data by race, gender, district and school.

Updated July 2019